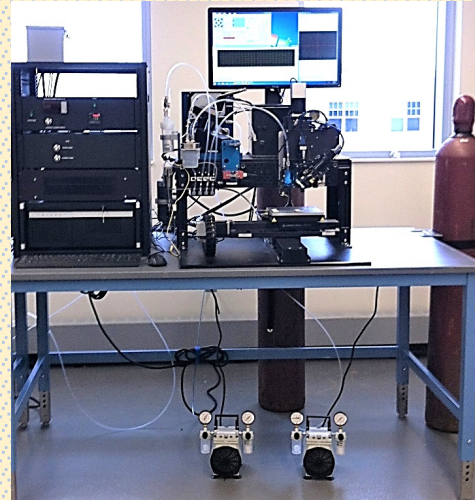
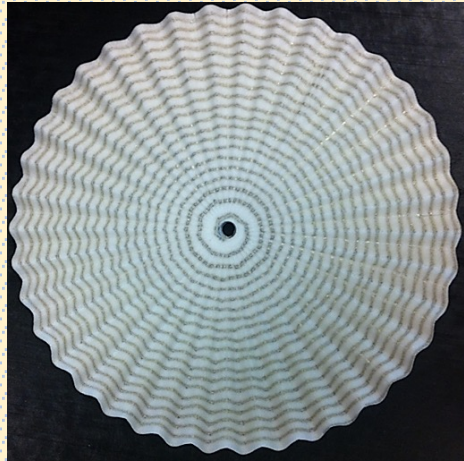


Electronic Printing at CSU

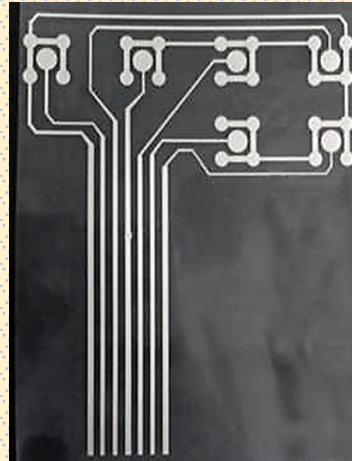
- The facility has two electronic printers (Optomec AJ200 systems) and their supporting equipment, as seen in the photo on the right.
- Examples of printouts, as a result of collaborations of the facility with companies, are seen in the photos below:



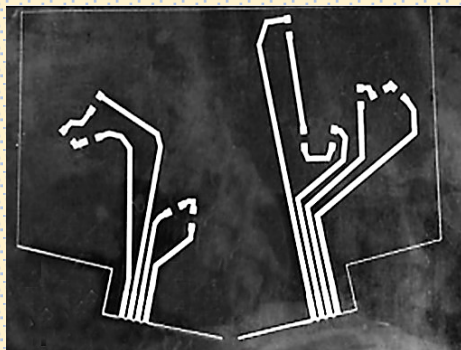
One of the two AJ200 electronic printing systems at CSU



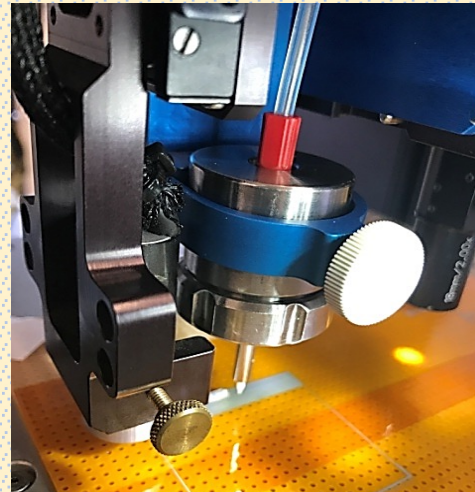
Antenna



Touching screen circuit



Lighting circuit



AJ 200 Printing Circuits on Kapton Tape